

# On-Call Surveying Services

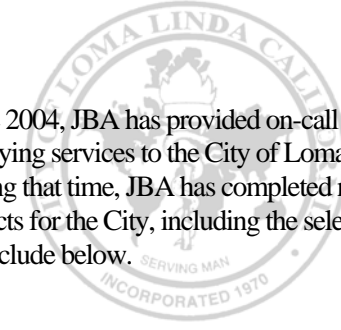
City of Loma Linda Public Works Department, Loma Linda, CA

## Client

City of Loma Linda  
Public Works Department  
25541 Barton Road  
Loma Linda, CA 92354-3160



Since 2004, JBA has provided on-call surveying services to the City of Loma Linda. During that time, JBA has completed numerous projects for the City, including the select project list include below.



## Project Location

Loma Linda, CA

## Contact

Jarb Thaipejr, P.E.  
City Engineer  
909 / 799-2830

## Project Date

2004 - Present

Survey Project	Survey Services	Year
Lind Avenue & Van Lueven Street Improvements	Topographic Survey & Construction Staking	2008
Cottage Street Improvements	Topographic Survey & Construction Staking	2007
Orange Grove & Academy Street Improvements	Topographic Survey & Construction Staking	2007
Lind Avenue Street Improvements	Topographic Survey & Construction Staking	2007
Cooley Street Improvements	Topographic Survey & Construction Staking	2007
Juanita Street Improvements	Topographic Survey & Construction Staking	2007
Cole Street Improvements	Topographic Survey & Construction Staking	2006
Seamont Drive Street Improvements	Topographic Survey & Construction Staking	2005
Lind Avenue Street Improvements	Topographic Survey & Construction Staking	2005
Library Expansion	Topographic Survey & Construction Staking	2005
Ohio Street Improvements	Topographic Survey & Construction Staking	2005
Richardson Street Improvements	Topographic Survey & Construction Staking	2005
Van Leuven Street Improvements	Topographic Survey & Construction Staking	2005
Hulda Creek Park	Topographic Survey & Construction Staking	2005
City Maintenance Yard	Topographic Survey & Construction Staking	2005

## Key Project Staff

Edward J. Bonadiman, P.L.S. – *Project Manager*  
Joseph S.C. Bonadiman, P.E. – *Quality Control & Project Oversight*



# On-Call Surveying Services

City of San Bernardino Development Services Department, San Bernardino, CA

## Client

City of San Bernardino  
Development Services  
Department  
300 North "D" Street  
San Bernardino, CA  
92418-0001



Since 2006, JBA has provided on-call surveying services to the City of San Bernardino. During that time, JBA has completed numerous projects for the City, including the select project list include below.

## Project Location

San Bernardino, CA

## Contact

Michael Grubbs, P.E.  
City Engineer  
909 / 384-5057, x3305

## Project Date

2006 - Present

Survey Project	Survey Services	Year
40th Street Improvements	Topographic Survey	2007
Piedmont Drive Storm Drain Improvements	Topographic Survey & Construction Staking	2007
Sierra Way Sewer Relocation	Topographic Survey	2007
"I" Street Sewer Relocation	Topographic Survey	2006
Cable Creek Sewer Improvements	Topographic Survey	2006
Tippecanoe Avenue Sewer Improvements	Topographic Survey	2006
"I" Street Sewer Improvements	Topographic Survey	2006
Goodlett Street Improvements	Topographic Survey	2006
"G" & 24th Street Improvements	Topographic Survey	2006
"E" Street Pavement Rehabilitation	Topographic Survey	2006
"L" Street Improvements	Topographic Survey	2006
Date Place Pavement Rehabilitation	Topographic Survey	2006
"G" Street Pavement Rehabilitation	Topographic Survey	2006
Waterman Avenue & 5th Street Pavement Rehabilitation	Topographic Survey	2006
Waterman Canyon	Topographic Survey	2006

## Key Project Staff

Edward J. Bonadiman, P.L.S. – *Project Manager*  
Joseph S.C. Bonadiman, P.E. – *Quality Control & Project Oversight*



# Civil Engineering Consulting & Surveying Services

## Lake Arrowhead Community Services District (LACSD), Lake Arrowhead, CA

### Client

Lake Arrowhead  
Community Services  
District (LACSD)  
28200 State Highway  
189, Bldg. 3, Ste. 150  
Lake Arrowhead, CA  
92352

### Project Location

Lake Arrowhead, CA

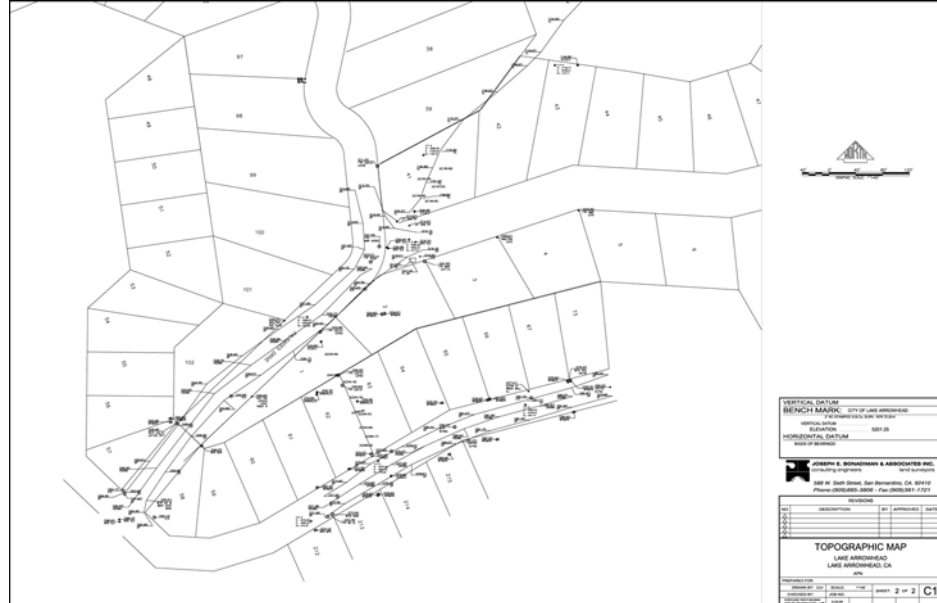
### Contacts

Ryan Gross, P.E.  
District Engineer  
909/336-7137

Ken Nelson  
Operations Manager  
909/336-7151

### Project Date

2003 - Present



Since 2003, JBA has provided civil engineering and surveying services to the Lake Arrowhead Community Services District (LACSD) in Lake Arrowhead, CA. Completed survey projects include topographic surveys of the Cedar Glen area, Tract 15612, Tract 17159, Tract 16185, Tract 16211, and Tract 2526.

JBA has also provided engineering consulting services to LACSD for various public works projects, such as the new Burnt Mill Reservoir. In addition, Joseph S.C. Bonadiman, P.E. served as acting District Engineer from 2003 to 2005, during which time he oversaw all District capital improvement and maintenance projects.

### Key Project Staff

Joseph S.C. Bonadiman, P.E. – LACSD Interim District Engineer (2003-2005)

Jay Gunther, P.L.S. – Project Manager

Edward J. Bonadiman, P.L.S. – Survey Manager

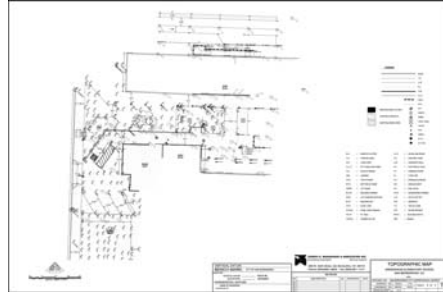


# On-Call Surveying Services

San Bernardino City Unified School District (SBCUSD), San Bernardino, CA

## Client

City of San Bernardino  
 Unified School District  
 (SBCUFD)  
 777 North "F" Street  
 San Bernardino, CA  
 92410



Since 2004, JBA has provided on-call surveying services to the San Bernardino City Unified School District (SBCUSD). During that time, JBA has completed numerous projects for the SBCUSD, including the select project list include below.

## Project Location

San Bernardino, CA

## Contact

Jorge C. Mendez  
 Assistant Superintendent  
 909 / 381-1238, x4913

## Project Date

2004 - Present

Survey Project	Survey Services	Year
Little Mountain	Topographic Survey	2007
Middle College High School	Topographic Survey	2007
Emmerton Elementary School	Topographic Survey & Construction Staking	2006
Arrowhead Elementary School	Topographic Survey	2004
Carmack Elementary School	Topographic Survey	2004
Hillside Elementary School	Topographic Survey	2004
Roosevelt Elementary School	Topographic Survey	2004
Richardson High School	Topographic Survey	2004
Fairfax Elementary School	Topographic Survey	2004
Arrowview Middle School	Topographic Survey	2004
Rio Vista Elementary School	Topographic Survey	2004
Mount Vernon Elementary School	Topographic Survey	2004
Urbita Elementary School	Topographic Survey	2004
San Bernardino High School	Topographic Survey	2004
Middle College High School	Topographic Survey	2004
Lytle Creek Elementary School	Topographic Survey	2004
San Gorgonio High School	Topographic Survey	2004

## Key Project Staff

Edward J. Bonadiman, P.L.S. – *Project Manager*  
 Joseph S.C. Bonadiman, P.E. – *Quality Control & Project Oversight*



# Marine Corps Base GPS Survey

Mojave Desert, Southern California

## Client

*Sensis Corporation  
5717 Enterprise Parkway  
E. Syracuse, NY 13057*

## Project Location

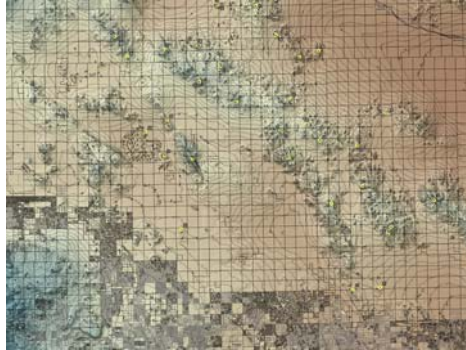
*Mojave Desert,  
Southern California*

## Contact

*Kurt P. Kutler  
ATS Systems Engineer  
315 / 278-4200*

## Completion Date

2005



JBA was retained by Sensis Corporation to perform a GPS survey of a large United States Marine Corps Base in the Mojave Desert of Southern California. The size and terrain of the project site necessitated helicopter transportation.

As part of its services, JBA also prepared various Geographic Information System (GIS) exhibits illustrating the accuracy of the GPS points obtained from the survey.

## **Project Staff**

Edward J. Bonadiman, P.L.S. – *Survey Manager*  
Michael J. Bonadiman – *Director of Surveys*

