

600-Acre, 92 MW Photovoltaic (P.V.) Solar Project

Los Angeles County, CA

Client

NRG Energy, LLC
1817 Aston Avenue, #104
Carlsbad, CA 92008

Project Location

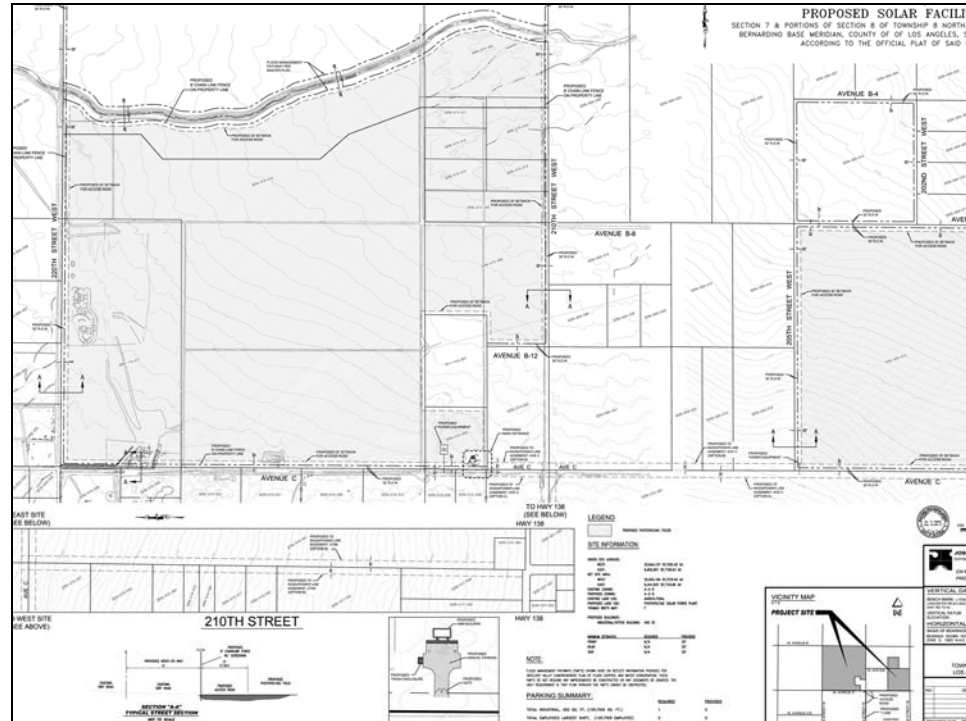
Los Angeles County, CA

Contact

Richard Dryden
(760) 710-2150

Completion Date

Current Project



JBA provided Civil Engineering consultation/design, site layout, grading plans, aerial survey control, field topographic surveying, ALTA, Record of Survey, Preliminary Hydrology Study & Drainage Analysis, Floodplain Simulation/Modeling & Analysis, quantities/cost estimates, public notice package, and Geotechnical bid management

services for the 600-acre, 92 MW NRG Solar, Inc. Alpine photovoltaic (PV) facility in Los Angeles County, CA.

The project was approved and conditioned by the Los Angeles County Planning Commission in December of 2010, and has entered into final design/final permitting.

Key Project Staff

J.T. Stanton, P.E., L.S.I.T. – *Project Engineer*
Dennis W. Jackson, P.E. – *Senior Water Resources Engineer*
Edward J. Bonadiman, P.L.S. – *Survey Manager*



300-Acre, 20 MW Photovoltaic (P.V.) Solar Project

San Diego County, CA

Client

*U.S. Solar Holdings
1015 West Hays Street
Boise, ID 83702*

Project Location

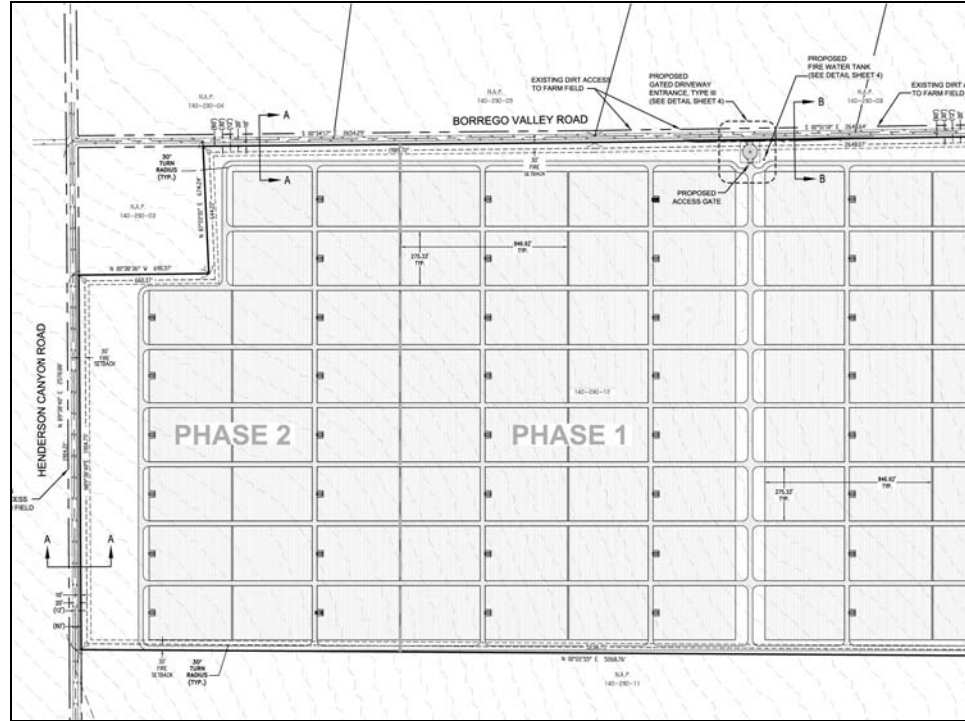
San Diego County, CA

Contact

(208) 344-5428

Completion Date

Current Project



JBA provided Civil Engineering consultation/design, site layout, grading plans, GIS/topographic base mapping, Preliminary Hydrology Study & Flood Analysis, quantities/cost estimates, and Storm Water Quality documents for the 300-acre, 20 MW U.S. Solar Borrego

Springs photovoltaic (PV) facility in San Diego County, CA. JBA provided design layouts for both fixed and tracking PV layouts.

The project is currently under review by the San Diego County Department of Public Works.

Key Project Staff

*J.T. Stanton, P.E., L.S.I.T. – Project Engineer
Dennis W. Jackson, P.E. – Senior Water Resources Engineer
Edward J. Bonadiman, P.L.S. – Survey Manager*



120-Acre, 22 MW Photovoltaic (P.V.) Solar Project

Riverside County, CA (Near Blythe)

Client

*First Solar (As
Subcontractor to Modern
Alloys, Inc.)
350 West Washington
Street, Suite 600
Tempe, AZ 85281*

Project Location

*Riverside County, CA
(Near Blythe)*

Contact

(419) 662-6899

Completion Date

2010



JBA provided Construction Staking and prepared the ALTA Survey for the 120-acre, 22 MW First Solar/NRG Energy, Inc. Blythe photovoltaic (PV) facility near

Blythe in Riverside County, CA. The project has since been constructed.

Key Project Staff

Edward J. Bonadiman, P.L.S. – *Survey Manager*

